

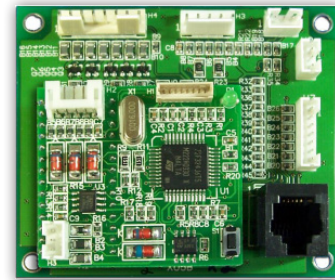
## X05B

### Expander Card

The X05B general purpose logic board provides a variety of I / O functionality

As part of the guestroom Energy Management System (EMS), the X05B receives control signals from the room's INNCOM E-Series thermostat through either an S5 bus wired connection, the TXR505.R IR5 wireless transceiver, or the PC502.2 wireless RF protocol converter. The X05B then outputs control signals from Honeywell's INNCOM Integrated Room Automation System to X06 relay pack contacts.

The unit typically mounts to the X06 or on an extrusion rail.



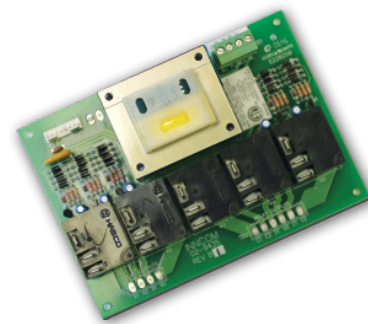
X05B Expander Card

## V50H

### Expander Card

The V50 is a five-relay printed circuit board assembly that is designed to provide line-voltage control capabilities for controllers.

The unit is powered by an external 24VAC transformer and feeds power to the controller through an 8-pin cable assembly.



V50H Expander Card

## FEATURES & BENEFITS



2 TTL expander ports  
X06 relay board interface  
X5Bus or Wireless



Two 0-10VDC analog  
inputs and outputs  
5 digital outputs for relay  
control  
6 digital inputs

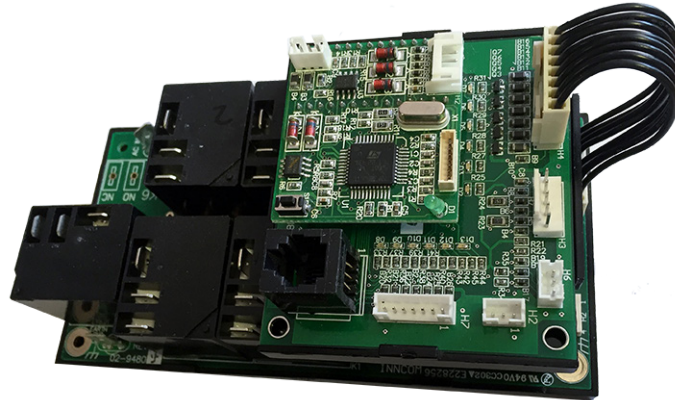
# X05B / V50H Expander Cards

## X05B SPECIFICATIONS

<b>INPUTS</b>	Two 0–10VDC analog inputs 6 digital inputs
<b>OUTPUTS</b>	5 digital outputs for relay control
<b>COMMUNICATIONS</b>	Wired S5Bus, TXR505.R IR5 wireless transceiver or PC502.2 wireless RF protocol converter
<b>PORTS</b>	2TTL expander ports
<b>INTERFACE</b>	X06 relay board interface
<b>VOLTAGE</b>	12VDC
<b>APPROVALS</b>	FCC, CE Approved

## V50H SPECIFICATIONS

<b>POWER IN</b>	24VAC 60/60 Hz (V50) 120/240 VAC 50/60 Hz (V50T)
<b>RELAY OUTPUTS</b>	120/240/277 VAC



*X05B Expander Card mounted on an X06 Relay*

### For more information

[www.inncom.com](http://www.inncom.com)

### Honeywell Building Technologies

12 Clintonville Road  
Northford, CT 06472  
1-800-543-1999

X05B/V50HData | RevA | 04/17 ©  
2016 Honeywell International Inc.

**Honeywell**  
THE POWER OF **CONNECTED**